



# COMMITTEE MEMBERSHIP

## Steering and Planning Committee Members

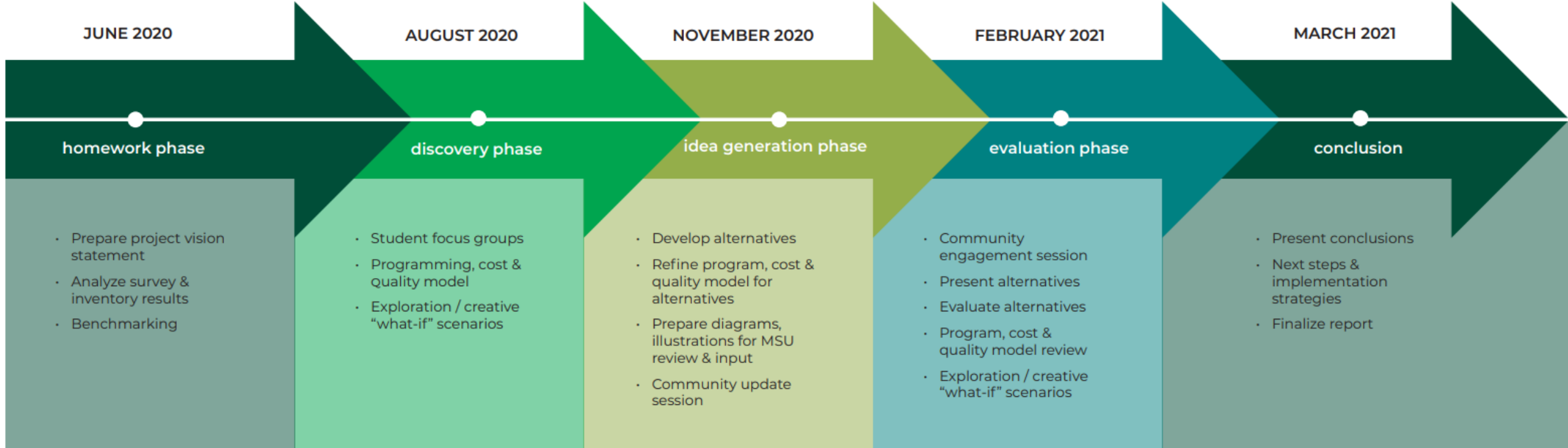
- Floyd Akins
- Diane Barker
- Dan Bollman
- Tiana Carter
- Tammi Cervantes
- Miracle Chatman
- Lizmary Fernandez
- Tina Alonzo
- Taryn Emerson
- Mark Fellows
- Terry Frazier
- Vennie Gore
- Jeff Kasdorf
- Barb Kranz
- Sarah McConville
- Brian Mullen
- Sharron Reed-Davis
- Lisa Sudia
- Shiksha Sneha
- Xavier Renders

## Hamilton Anderson / Moody Nolan Team

- DaMarlon Carter
- Megan Diecchio
- Mark Farlow
- Rainy Hamilton
- Alhan Jaafar
- Earl Lee III
- Jonathon Moody
- Devyn Quick



# FEASIBILITY STUDY | PHASES



# COMMUNITY ENGAGEMENT

- **DEI Survey** regarding existing programming sent to major administrative units on campus | January 2020
- **DEI Student Survey** | April 2020
- **Campus Survey** sent to 400,000 students, faculty, staff and alumni | August 2020
- **Three Focus Group sessions** of 40-50 people each | August 2020
- **Focused Conversations** | September 2020
  - Council of Racial and Ethnic Students (CORES)
  - Council of Progressive Students (COPS)
  - Multicultural Unity Center (MOSAIC)
  - Office of Cultural and Academic Transitions (OCAT)
  - Student Affairs and Services Directors
  - Long-term faculty and staff of MSU Community
- **Community Update Session** | November 2020
- **Community Engagement Session** | January 2021



# SPACE PROGRAM | OUTLINE

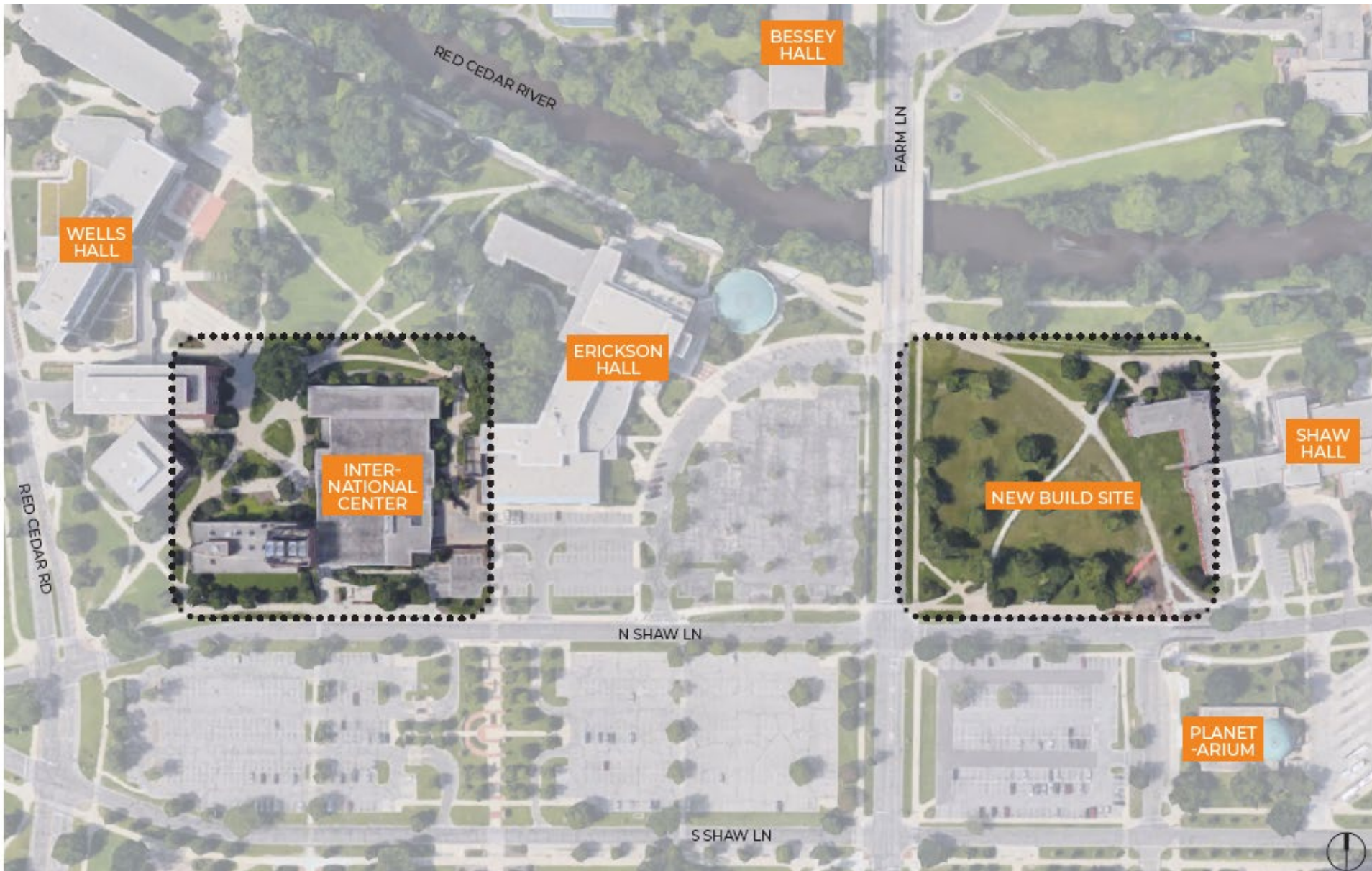
BASE PROGRAM	
WORKSPACE	SUPPORT SPACE
Office/Workstations	Catering Support Space
Program and Facility Staff Offices	Mail Room/Printing/Storage
Drop-in Offices/Hoteling	Student Organization Storage
SHARED SPACE	Lockers
Multipurpose Room	Facility Storage
Meeting Rooms (Large, Medium, Small)	COMMON AREA
Breakout Rooms	Main Entry
Workroom	Reception Area/Exhibit Space
Quiet Study Space	Main Lounge/Living Room
Resource Center	Restrooms including all gender
Computer Stations	
Reflection Room (Individual & Group)	
Ablution Station	
Personal Health Room	
Community Kitchen	
Dreamer Center	

**ADD ALTERNATES**

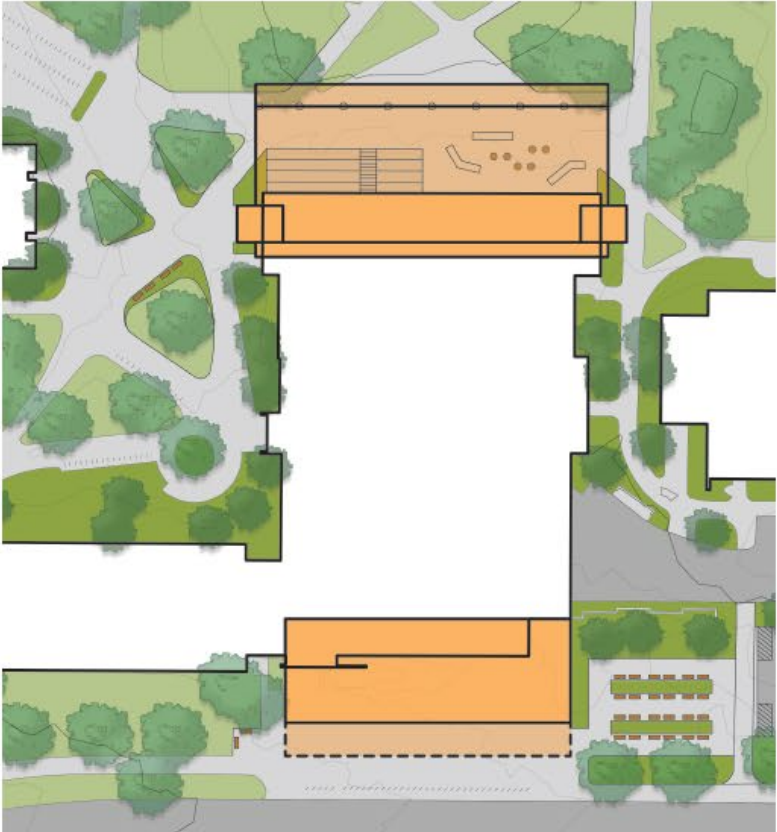
**ADDITIONAL PROGRAM OPTIONS**

- Dance Practice
- International Sparty's
- Large Event Space

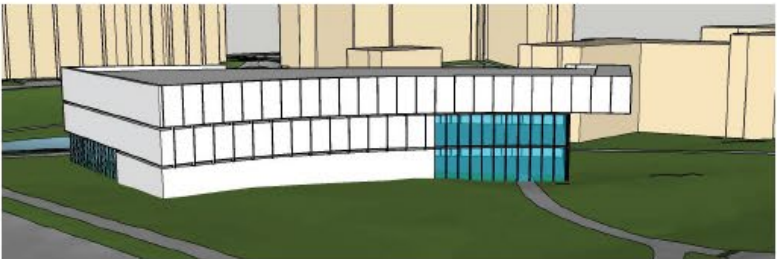
# PROPOSED SITES



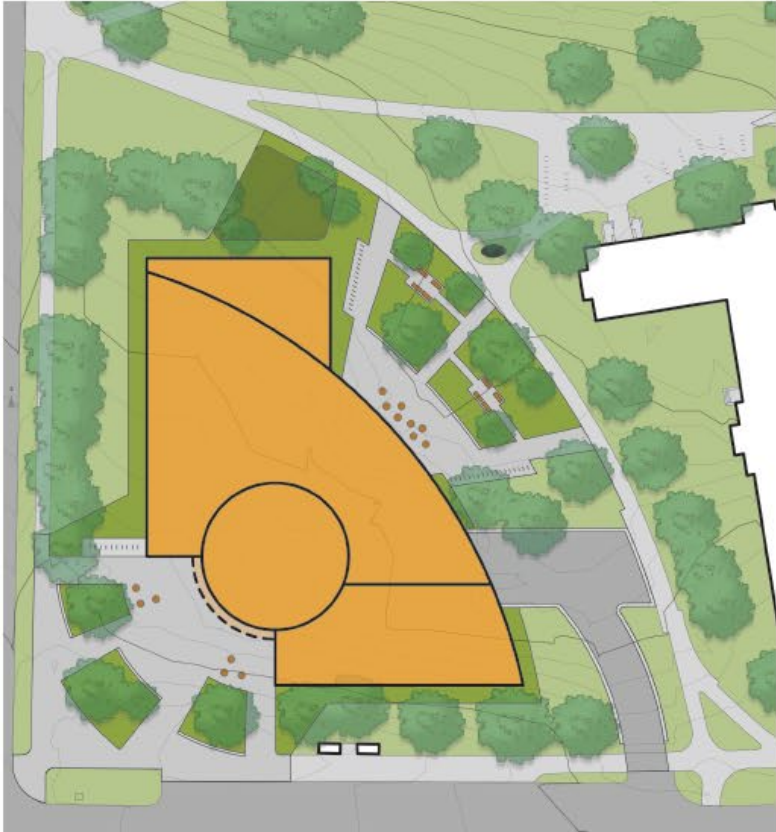
# OVERVIEW | CONCEPTUAL



INTERNATIONAL CENTER



THE ARC



THE ATRIUM

# INTERNATIONAL CENTER



VIEW OF SOUTH ENTRANCE AT N SHAW LN



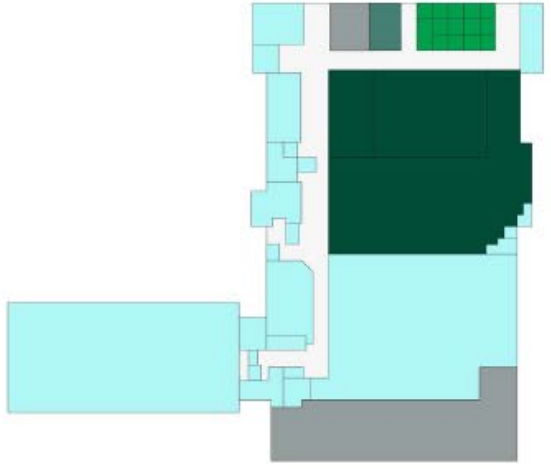
VIEW OF EAST FACADE ADJACENT TO ERICKSON HALL



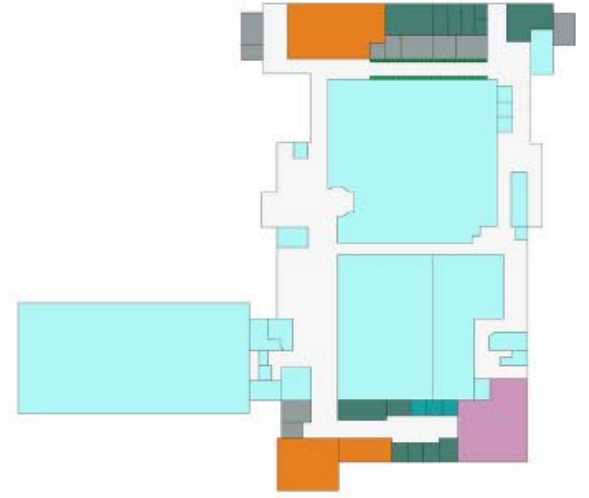
VIEW OF SOUTH ENTRANCE, FROM ABOVE



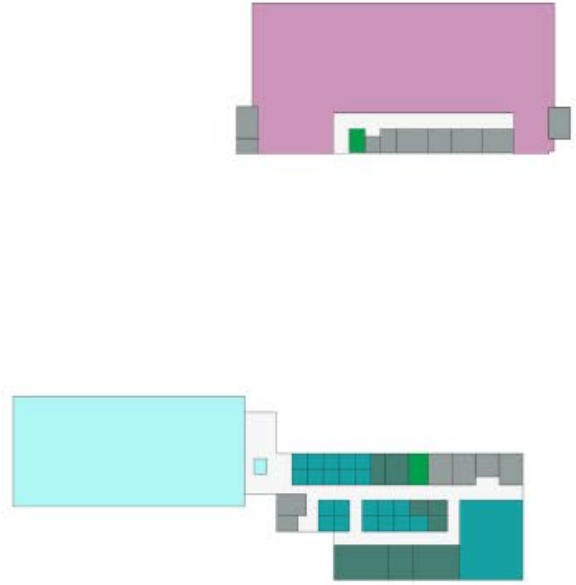
# INTERNATIONAL CENTER | BLOCK PLAN



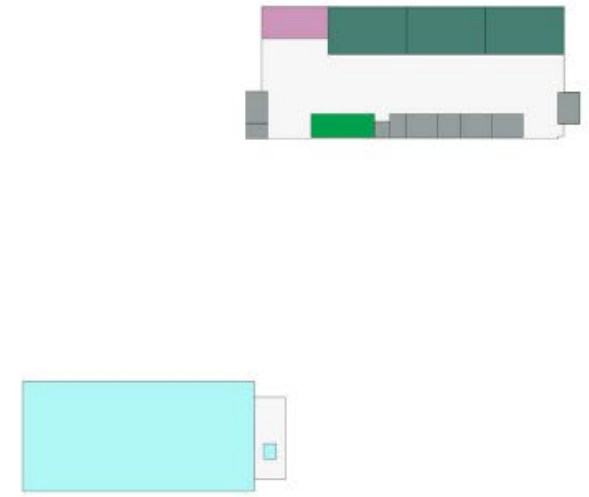
Ground Floor Plan



First Floor Plan



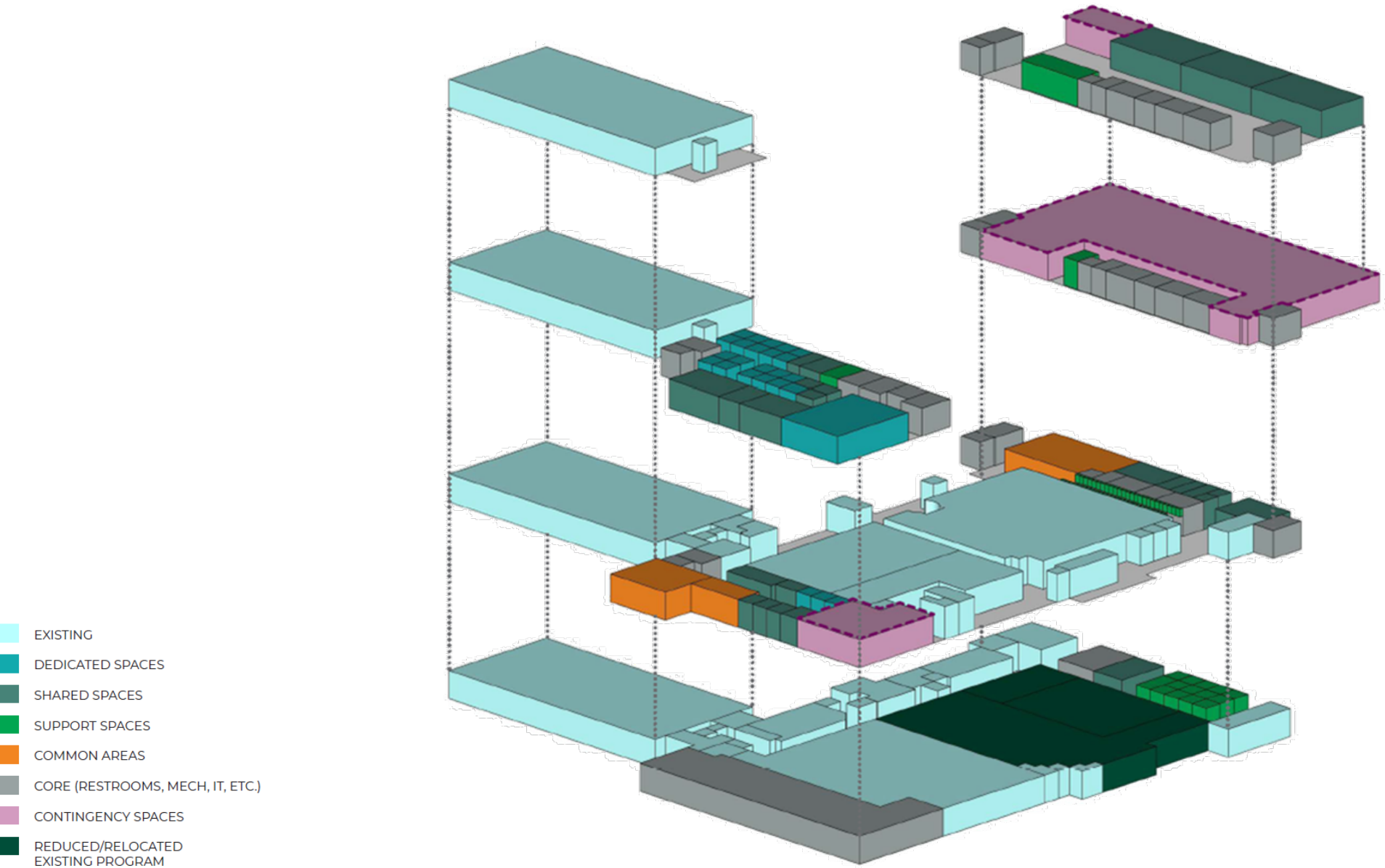
Second Floor Plan



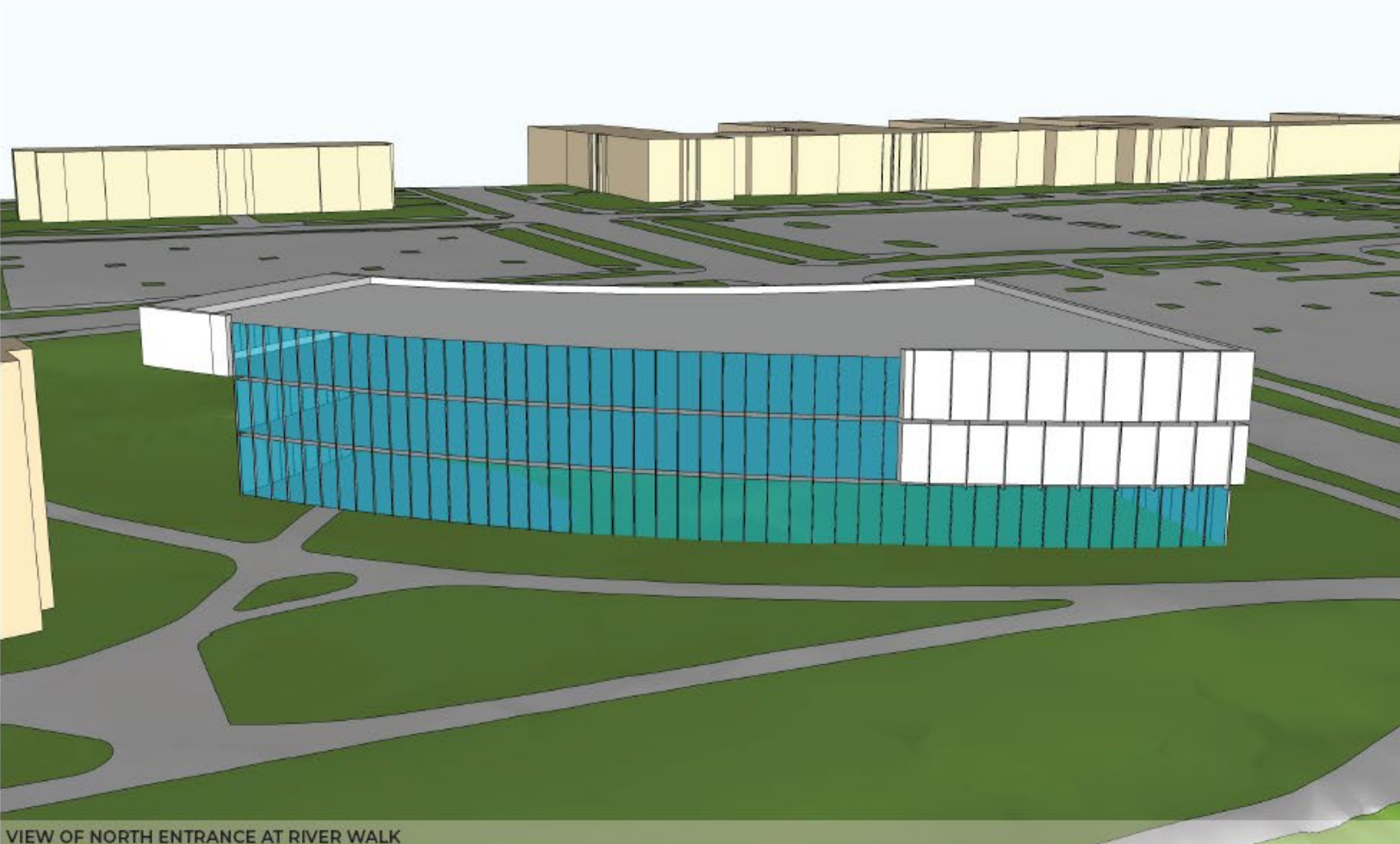
Third Floor Plan

- EXISTING
- DEDICATED SPACES
- SHARED SPACES
- SUPPORT SPACES
- COMMON AREAS
- CORE (RESTROOMS, MECH, IT, ETC.)
- CONTINGENCY SPACES
- REDUCED/RELOCATED EXISTING PROGRAM

# INTERNATIONAL CENTER | STACKING DIAGRAM



# THE ARC



VIEW OF NORTH ENTRANCE AT RIVER WALK

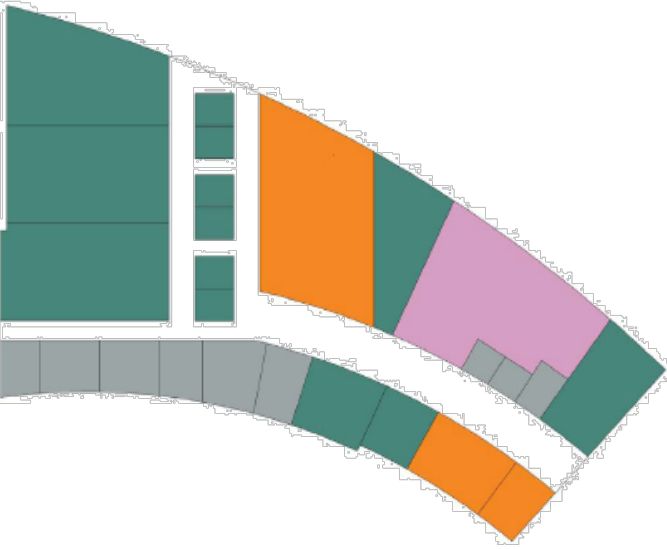


VIEW OF NORTHEAST ENTRANCE, FROM ABOVE

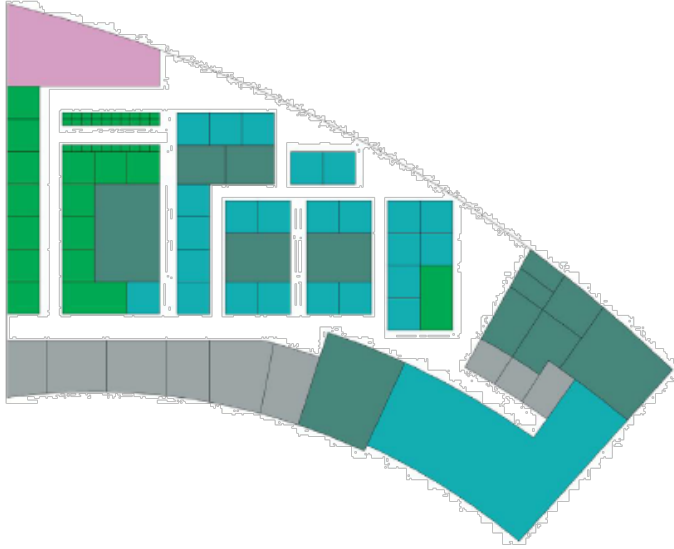


VIEW OF EAST FACADE ADJACENT TO SHAW HALL

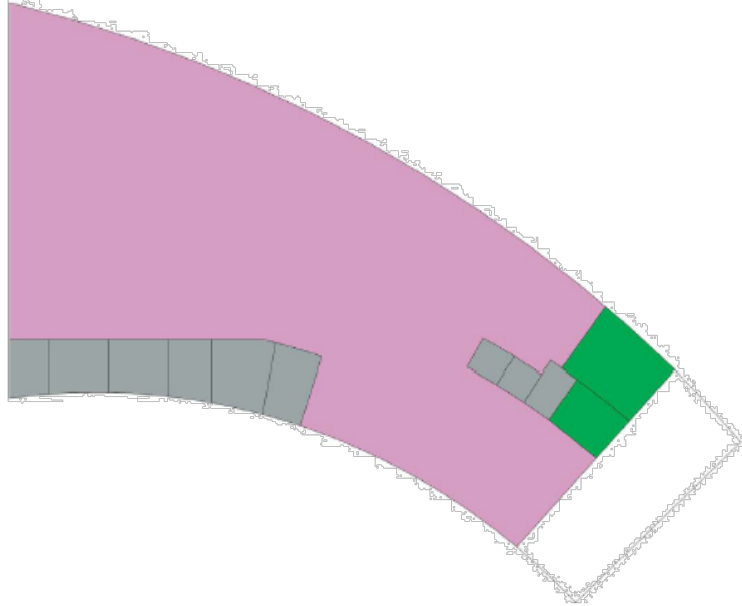
# THE ARC | BLOCK PLAN



First Floor Plan



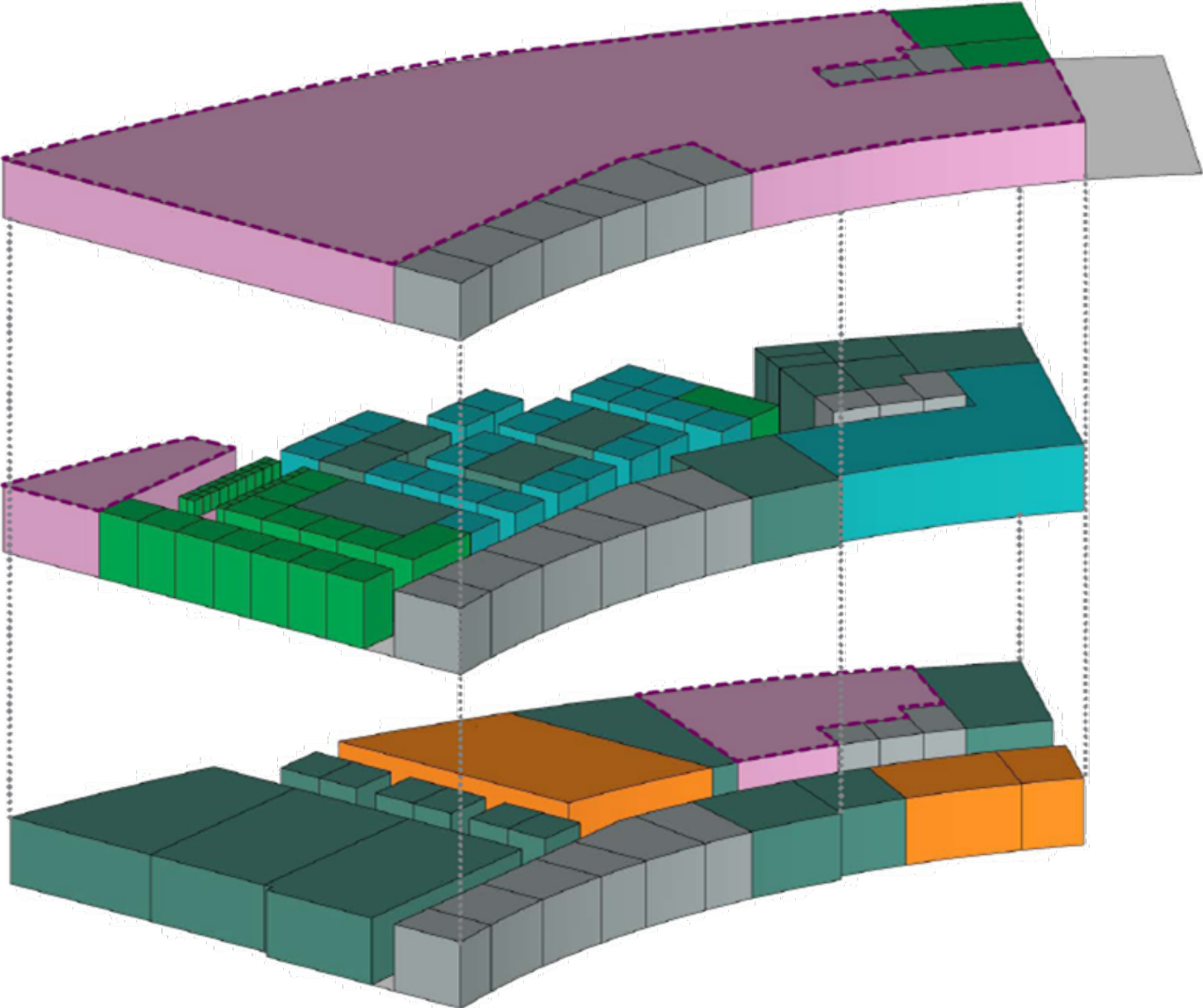
Second Floor Plan



Third Floor Plan

- TEAL DEDICATED SPACES
- DARK GREEN SHARED SPACES
- LIGHT GREEN SUPPORT SPACES
- ORANGE COMMON AREAS
- GREY CORE (RESTROOMS, MECH, IT, ETC.)
- PINK CONTINGENCY SPACES

# THE ARC | STACKING DIAGRAM



- TEAL DEDICATED SPACES
- TEAL SHARED SPACES
- GREEN SUPPORT SPACES
- ORANGE COMMON AREAS
- GREY CORE (RESTROOMS, MECH, IT, ETC.)
- PINK CONTINGENCY SPACES

# THE ATRIUM



VIEW OF SOUTH ENTRANCE AT N SHAW LN AND FARM LN

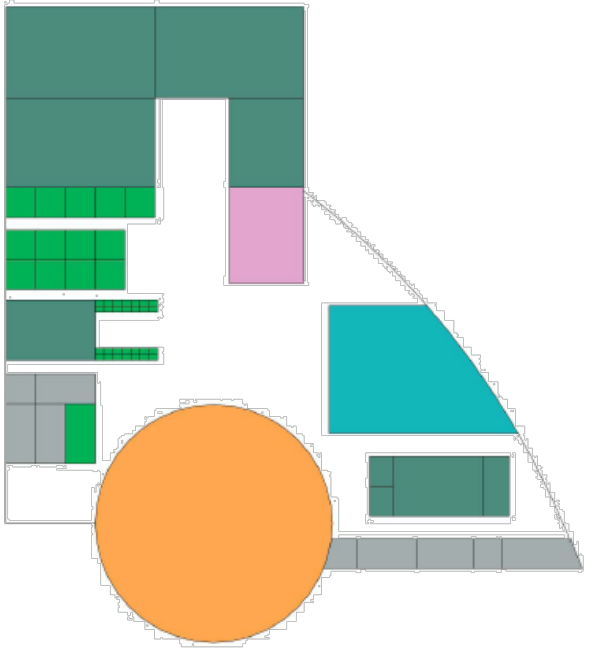


VIEW OF SOUTH ENTRANCE, FROM ABOVE

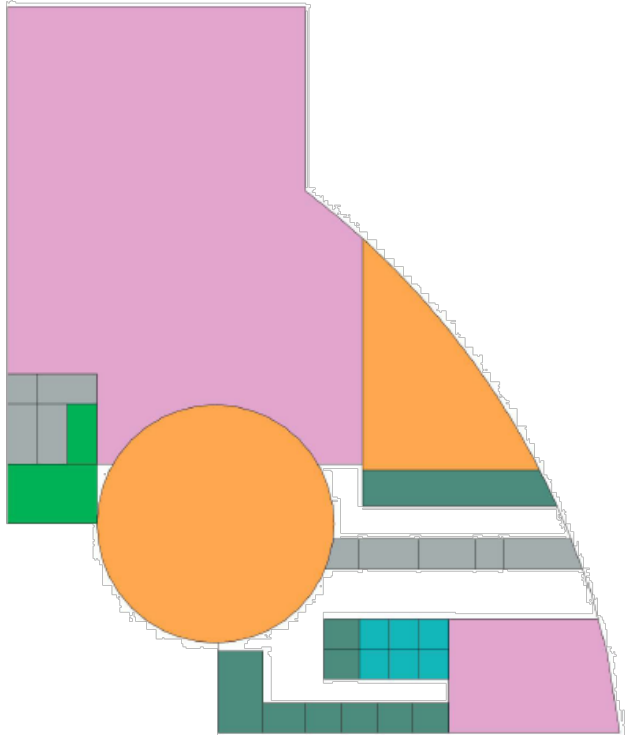


VIEW OF WEST FACADE ADJACENT TO FARM LN

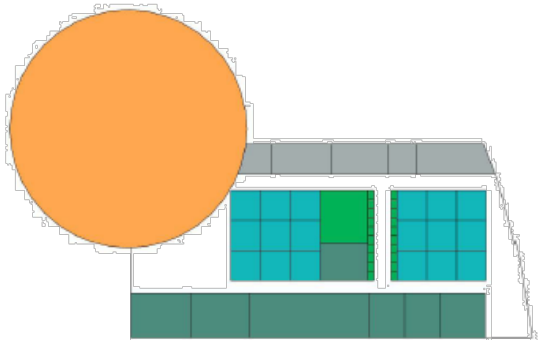
# THE ATRIUM | BLOCK PLAN



Ground Floor Plan



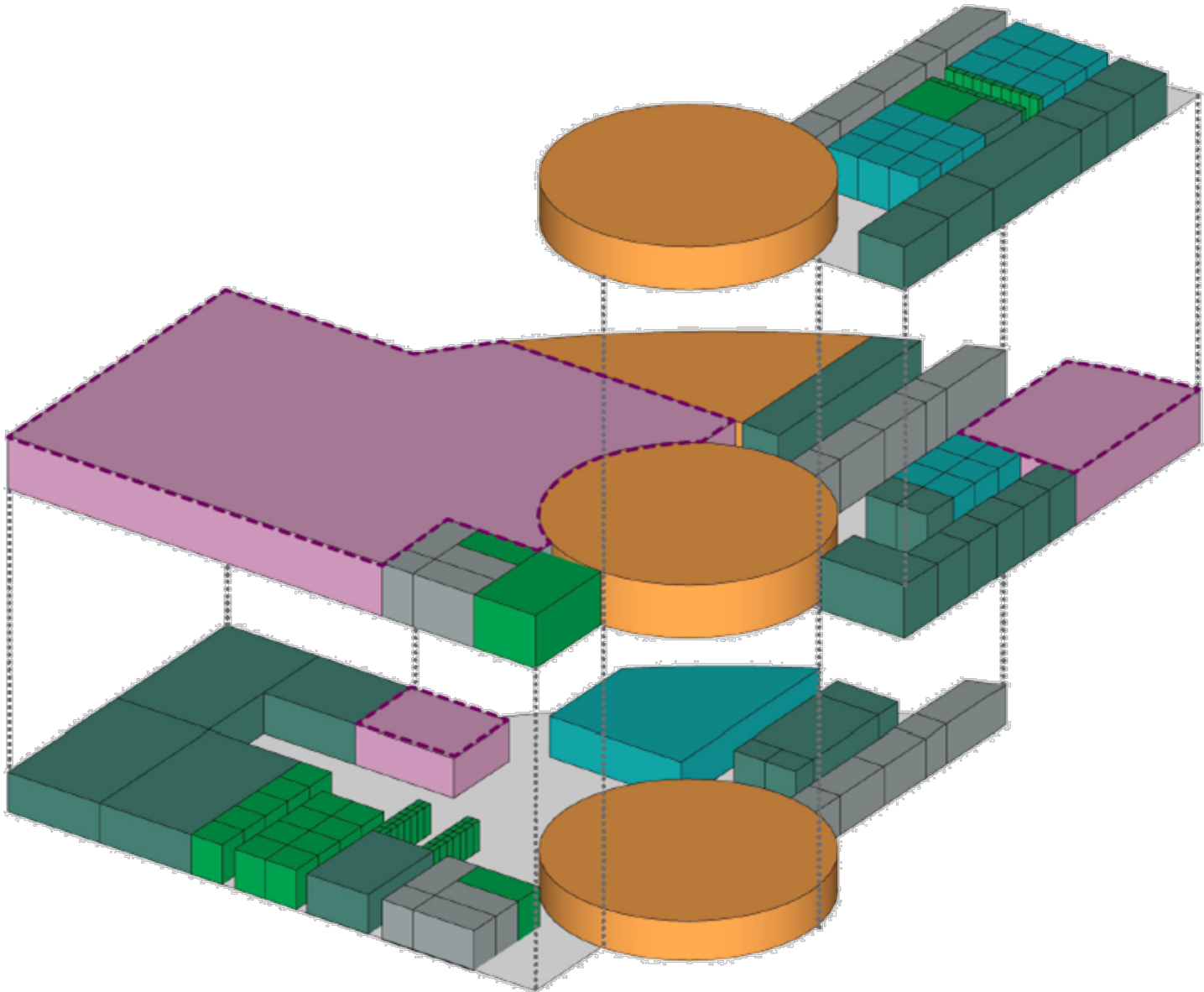
First Floor Plan



Second Floor Plan

- TEAL: DEDICATED SPACES
- GREEN: SHARED SPACES
- BRIGHT GREEN: SUPPORT SPACES
- ORANGE: COMMON AREAS
- GREY: CORE (RESTROOMS, MECH, IT, ETC.)
- PINK: CONTINGENCY SPACES

# THE ATRIUM | STACKING DIAGRAM



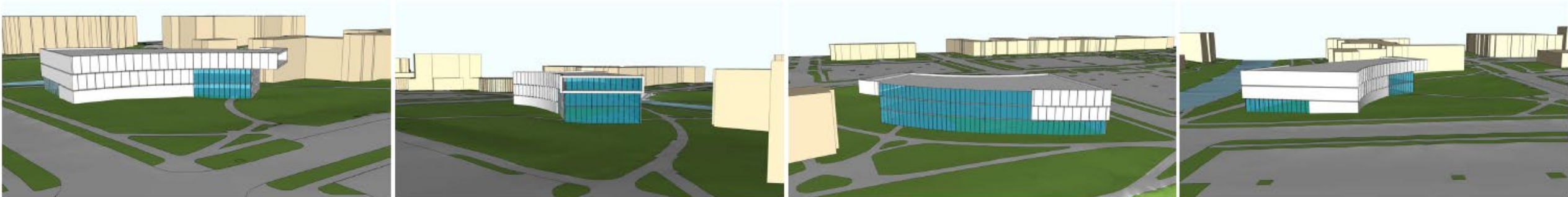
- TEAL: DEDICATED SPACES
- DARK TEAL: SHARED SPACES
- BRIGHT GREEN: SUPPORT SPACES
- ORANGE: COMMON AREAS
- GREY: CORE (RESTROOMS, MECH, IT, ETC.)
- PURPLE: CONTINGENCY SPACES



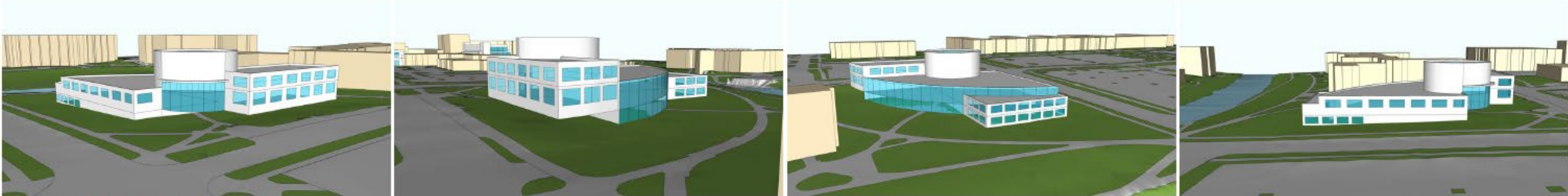
# OPTION COMPARISON



Site 1: International Center



Site 2A: The Arc



Site 2B: The Atrium

# COST CLARIFICATIONS

- **Construction Costs** - Includes all anticipated construction manager and trade subcontractor costs
- **University Project Costs** – Includes all design costs, university construction administration, permits and stormwater management fees
- **Work by Owner** – Includes work reserved for MSU forces such as commissioning, security and ancillary utility tie-ins
- **Other Costs** – Includes furniture, fixtures and equipment (FFE), art on campus and project contingency
- **Costs are based on the midpoint of construction occurring during 2024.** Cost escalation must be considered if the project is constructed at a later date.
- **The International Center Option** includes two separate additions, upgrades to existing space between the additions for continuity, and code driven upgrades throughout the building that are required due to significant modification. These factors bring the cost for the addition and remodel option closer to the cost associated with the new construction options.

# COST ESTIMATE COMPARISON

Base Program	Site 1: International Center	Site 2A: The Arc	Site 2B: The Atrium
Construction Costs	\$24,132,160	\$27,283,360	\$25,475,840
University Project Costs	\$ 3,148,660	\$ 3,548,447	\$ 3,324,396
Work By Owner	\$ 473,652	\$ 486,234	\$ 477,544
Other Costs	\$ 4,183,926	\$ 4,817,336	\$ 4,590,640
<b>Forecasted Total Project Cost Rounded to the Nearest \$Million (Base Program)</b>	<b>\$32,000,000</b>	<b>\$36,000,000</b>	<b>\$34,000,000</b>
<b>Additional Program Options</b>			
E. Dance Practice Space	\$ 775,000	\$ 729,000	\$ 688,000
F. International Sparty's	\$ 2,215,000	\$ 2,084,000	\$ 1,966,000
G. Event Space	\$17,649,000	\$16,604,000	\$15,666,000
<b>Forecasted Total Project Cost Rounded to the Nearest \$Million (Base Program + Program Options E, F, &amp; G)</b>	<b>\$53,000,000</b>	<b>\$56,000,000</b>	<b>\$52,000,000</b>

\*Additional program options E, F & G correspond to the option designations in the detailed cost estimate found in the appendix of the report

# NEXT STEPS

- Funding Source(s)
- CIPWG 1 | Tentative July 2021
- BOT Step 1 Authorization to Plan | Tentative September 2021

